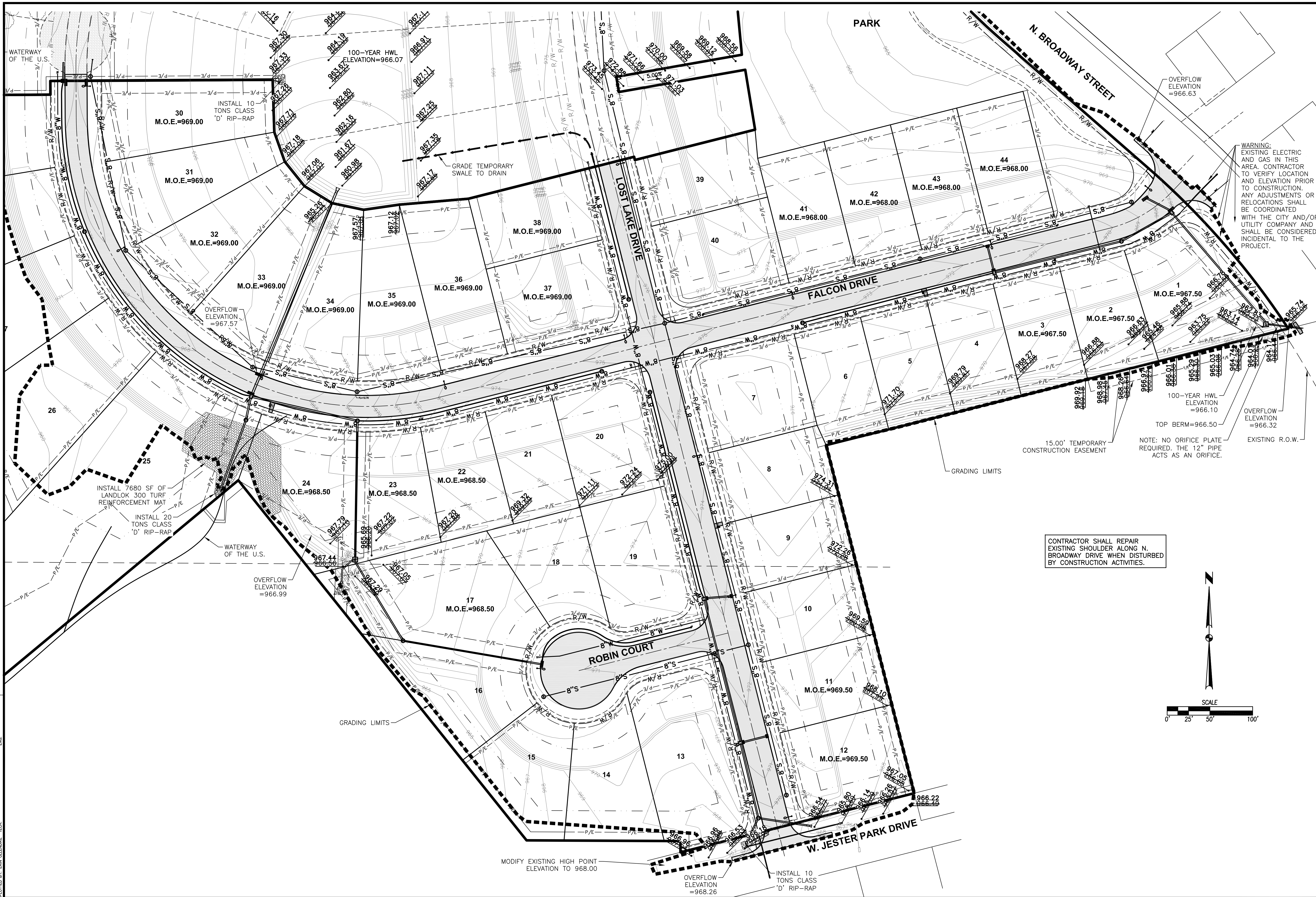


FILE: H:\2012\2012282\DWG\2012282-GRADING PLAN.DWG COMMENT: ENCL  
 PLOTTED BY: ESK GLENKIRKE TECH. DATE: 12/10/2014 11:40 AM



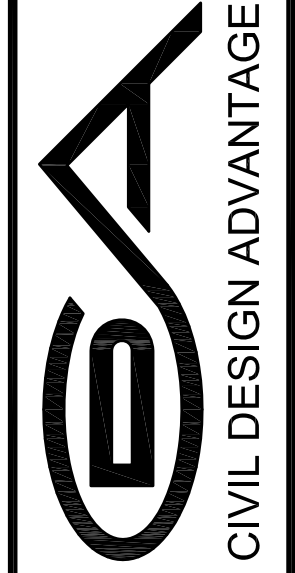
WARNING: EXISTING ELECTRIC AND GAS IN THIS AREA. CONTRACTOR TO VERIFY LOCATION AND ELEVATION PRIOR TO CONSTRUCTION. ANY ADJUSTMENTS OR RELOCATIONS SHALL BE COORDINATED WITH THE CITY AND/OR UTILITY COMPANY AND SHALL BE CONSIDERED INCIDENTAL TO THE PROJECT.

CONTRACTOR SHALL REPAIR EXISTING SHOULDER ALONG N. BROADWAY DRIVE WHEN DISTURBED BY CONSTRUCTION ACTIVITIES.

NOTE: NO ORIFICE PLATE REQUIRED. THE 12" PIPE ACTS AS AN ORIFICE.

| REVISIONS        | DATE     |
|------------------|----------|
| FINAL SUBMITTAL  | 08/29/13 |
| THIRD SUBMITTAL  | 08/21/13 |
| SECOND SUBMITTAL | 08/16/13 |
| FIRST SUBMITTAL  | 07/26/13 |

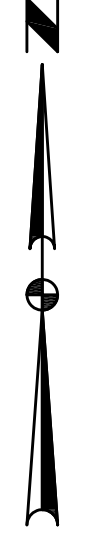
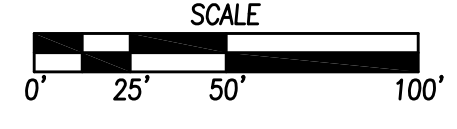
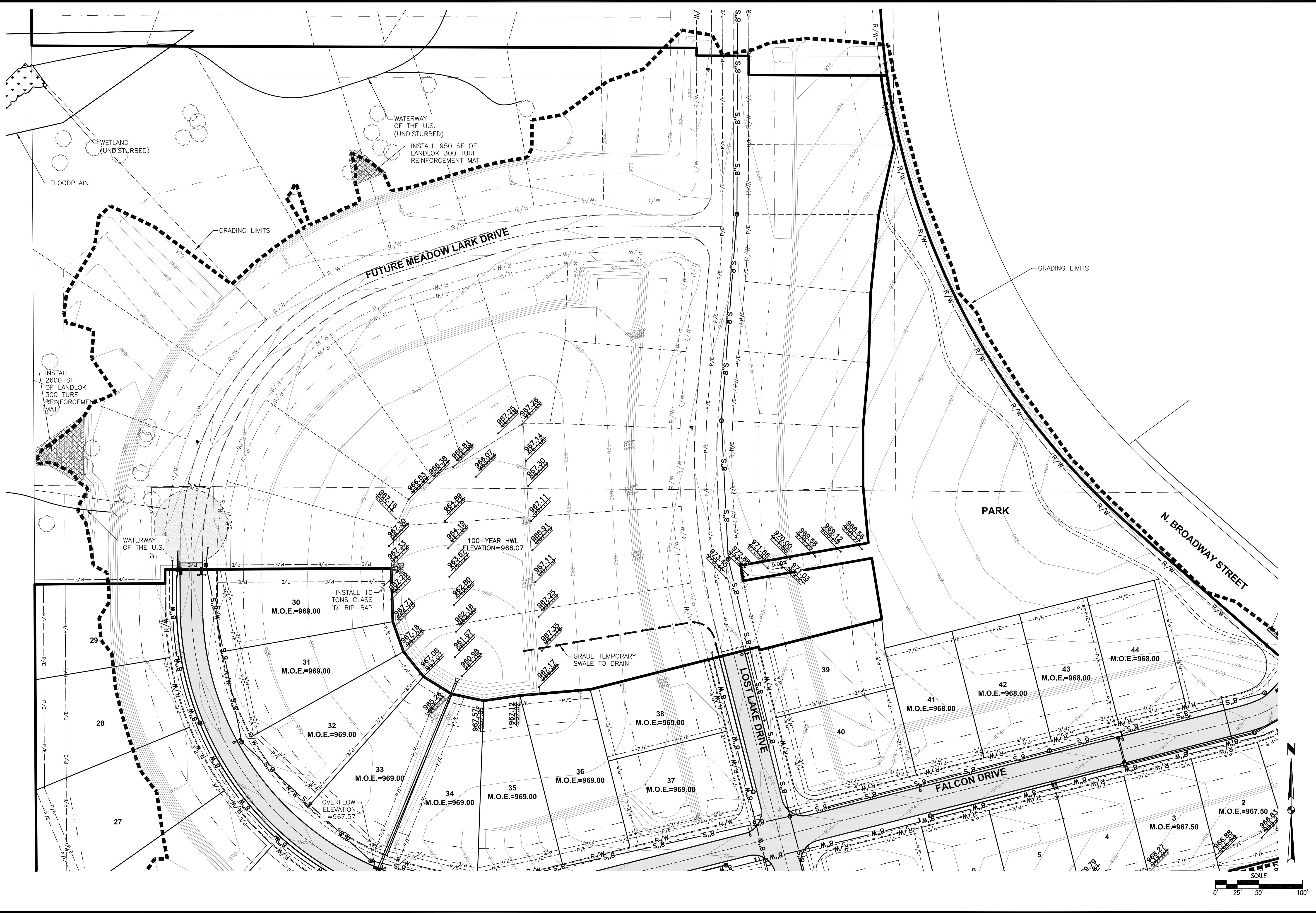
3405 S.E. CROSSROADS DRIVE, SUITE G  
 GRIMES, IOWA 50111  
 PHONE: (515) 369-4400 FAX: (515) 369-4410  
 ENGINEER: EKO PE: ENH



**LOST LAKE ESTATES PLAT 1**  
**AS-BUILT GRADING PLAN**

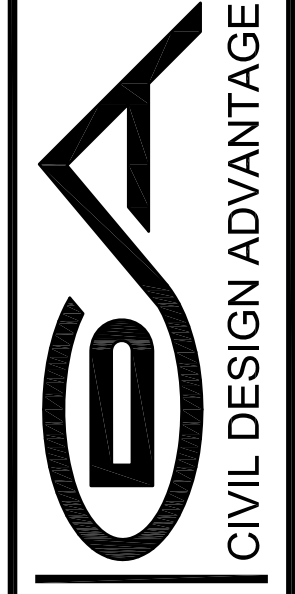
FILE: H:\2012\1207282\WORK\1207282-GRADING PLAN.DWG  
 DATE PLOTTED: 12/10/2014 11:40 AM  
 PLOTTED BY: ERS GLENKIRK TECH

COMMENTS:  
 ENC.



| REVISIONS         | DATE     |
|-------------------|----------|
| FIRST SUBMITTAL   | 07/26/13 |
| SECOND SUBMITTAL  | 08/16/13 |
| THIRD SUBMITTAL   | 08/21/13 |
| FINAL SUBMITTAL   | 08/29/13 |
| REVISED SUBMITTAL | 09/25/13 |
| REVISIONS         | 11/17/13 |

3405 S.E. CROSSROADS DRIVE, SUITE G  
 GRIMES, IOWA 50111  
 PHONE: (515) 369-4400 FAX: (515) 369-4410  
 ENGINEER: EKO PE: ENH



**7** **34**  
**LOST LAKE ESTATES PLAT 1**  
**AS-BUILT GRADING PLAN**  
 POLK CITY, IOWA  
 1207.292