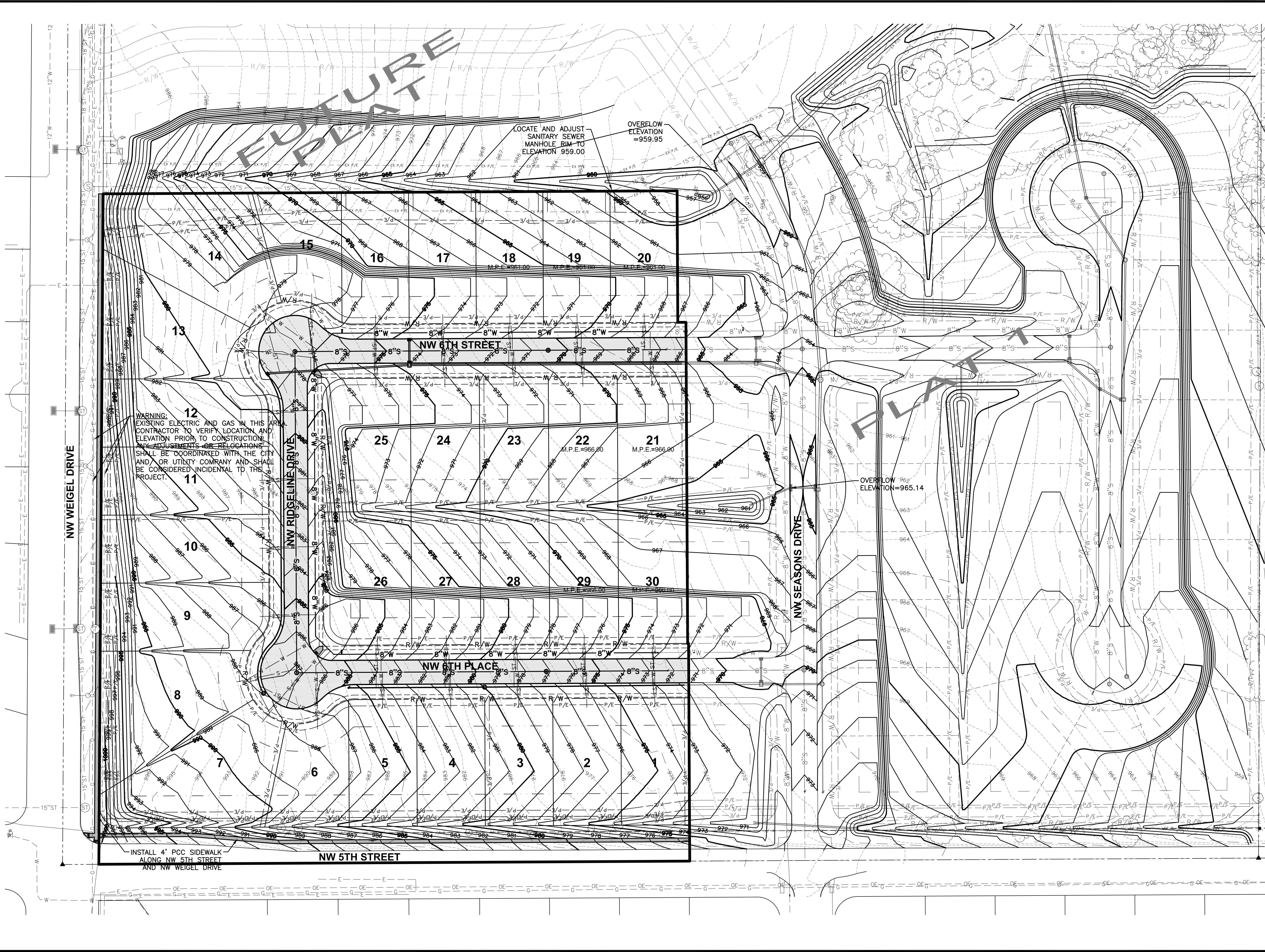


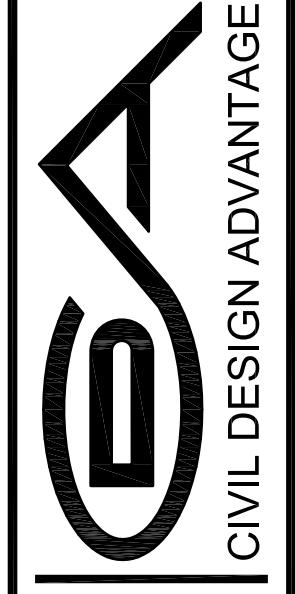
FILE: H:\2013\2013\05\120101P-GRADING.DWG
 COMMENTS: 5/16/2013 4:02 PM
 PLOTTED BY: ERN GLENNKE, TECH.
 ENG. EKO / ENH



- NOTES**
- REFER TO SEPARATE STORM WATER POLLUTION PREVENTION PLAN (SWPPP) FOR EROSION AND SEDIMENT CONTROLS.
 - MASS GRADING FOR ROCK CREEK CROSSING PLAT 2 WAS COMPLETED DURING THE GRADING OF PLAT 1. CONTRACTOR SHALL VERIFY THAT THE GRADING OPERATIONS PERFORMED MATCH THE PROPOSED GRADING PLAN SHOWN IN THIS PLAN SET.
 - PROTECT THE EXISTING STORM SEWER AND THE PONDING AREAS IN THE REAR YARDS OF PLAT 1 FROM SEDIMENT DURING CONSTRUCTION OF PLAT 2. REFER TO SWPPP FOR EROSION AND SEDIMENT CONTROLS.

REVISIONS	DATE
RECORD DRAWINGS	08/06/12
FINAL SUBMITTAL	03/23/12
SECOND SUBMITTAL	03/09/12
FIRST SUBMITTAL	02/17/12

3405 S.E. CROSSROADS DRIVE, SUITE G
 GRIMES, IOWA 50111
 PHONE: (515) 369-4400 FAX: (515) 369-4410
 ENGINEER: EKO / ENH TECH:



ANKENY, IOWA

**ROCK CREEK CROSSING PLAT 2
 GRADING PLAN**

