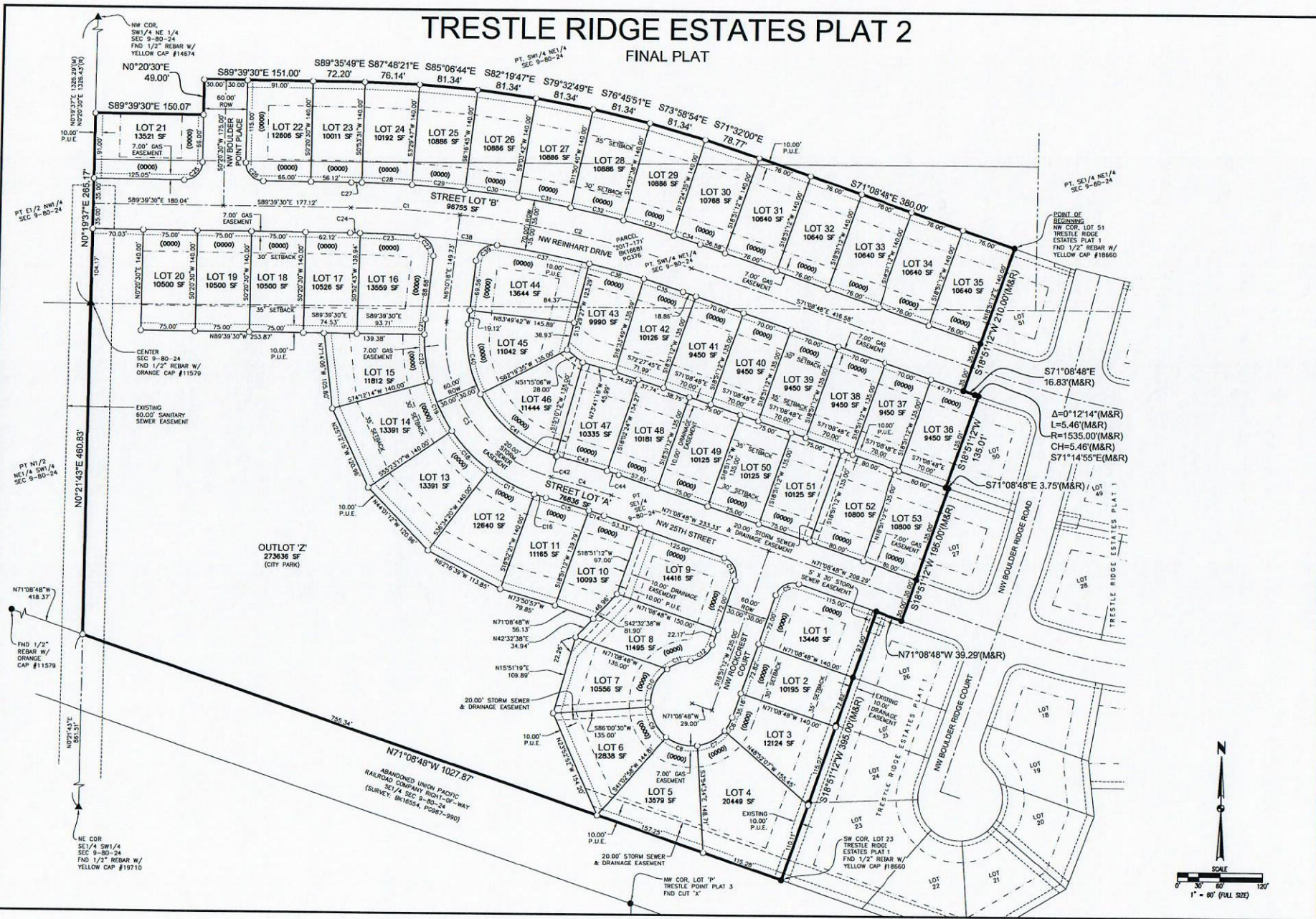


# TRESTLE RIDGE ESTATES PLAT 2

FINAL PLAT



DATE	REVISIONS	TECH.

3405 S.E. CROSSROADS DRIVE, SUITE G  
GRIMES, IOWA 50111  
PHONE: (515) 389-4400 FAX: (515) 389-4410  
ENGINEER: ANKENY, IOWA



TRESTLE RIDGE ESTATES PLAT 2  
FINAL PLAT  
CIVIL DESIGN ADVANTAGE