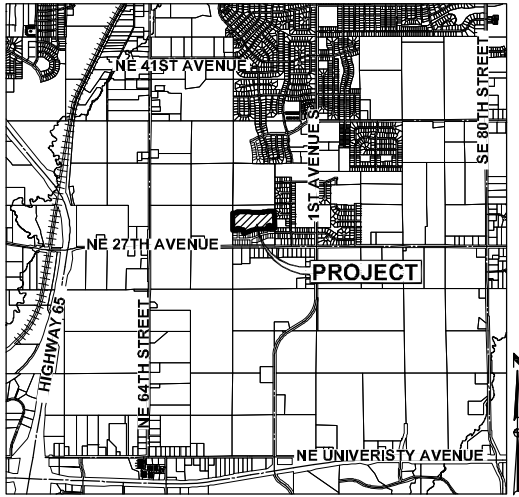
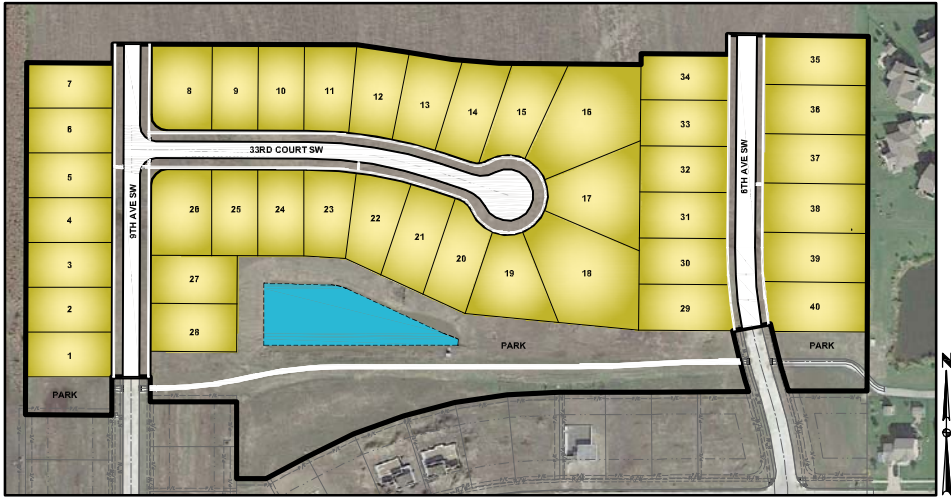


SALES PLAT FOR: BROOKHAVEN ESTATES PLAT 2 ALTOONA, IOWA



ALTOONA, IOWA



PLAT INFORMATION

LOT NO.	ADDRESS	LOT PRICE	LOT WIDTH	BUILDABLE WIDTH*	FRONT SETBACK	SIDE SETBACK	REAR SETBACK	BASEMENT	M.P.E.	GARAGE ORIENTATION
1	9TH AVE SW	\$59,900	70'	56'	30'	7'	35'	STD	947.00	
2	9TH AVE SW	\$59,900	70'	56'	30'	7'	35'	STD	947.00	
3	9TH AVE SW	\$59,900	70'	56'	30'	7'	35'	STD	947.00	
4	9TH AVE SW	\$59,900	70'	56'	30'	7'	35'	STD	947.00	
5	9TH AVE SW	\$59,900	70'	56'	30'	7'	35'	STD	947.00	
6	9TH AVE SW	\$59,900	70'	55'	30'	7'	35'	STD	947.00	
7	9TH AVE SW	\$59,900	70'	55'	30'	7'	35'	STD	947.00	
8	9TH AVE SW 33RD COURT SW	\$54,900	95'	58'	30'Ⓛ	7'	35'	STD	945.00	
9	33RD COURT SW	\$62,900	72'	57'	30'Ⓛ	7'	35'	STD	945.00	
10	33RD COURT SW	\$62,900	72'	57'	30'	7'	35'	STD	945.00	
11	33RD COURT SW	\$62,900	72'	58'*	30'	7'	35'	STD	945.00	
12	33RD COURT SW	\$65,900	72'	57'*	30'	7'	35'	STD/DL	945.00	
13	33RD COURT SW	\$65,900	72'	57'*	30'	7'	35'	DL/WO	945.00	
14	33RD COURT SW	\$67,900	72'	58'*	30'	7'	35'	WO	945.00	
15	33RD COURT SW	\$67,900	70'	56'*	30'	7'	35'	WO	945.00	
16	33RD COURT SW	\$74,900	72'	58'*	30'	7'	35'	WO	945.00	
17	33RD COURT SW	\$74,900	76'	62'*	30'	7'	35'	WO	945.00	
18	33RD COURT SW	SOLD	77'	63'*	30'	7'	35'	WO	943.25	
19	33RD COURT SW	SOLD	71'	57'*	30'	7'	35'	WO	943.25	
20	33RD COURT SW	SOLD	72'	58'*	30'	7'	35'	WO	943.25	
21	33RD COURT SW	SOLD	72'	58'	30'	7'	35'	WO	943.25	
22	33RD COURT SW	\$71,900	81'	67'*	30'	7'	35'	DL/WO	943.25	
23	33RD COURT SW	\$71,900	78'	64'*	30'	7'	35'	STD	943.25	
24	33RD COURT SW	\$71,900	72'	57'	30'	7'	35'	STD	943.25	
25	33RD COURT SW	\$66,900	72'	57'	30'	7'	35'	STD	943.25	
26	33RD COURT SW 9TH AVE SW	\$54,900	95'	58'	30'	7'	35'	STD	943.25	
27	9TH AVE SW	\$71,900	75'	61'	30'	7'	35'	DL/WO	943.25	
28	9TH AVE SW	\$73,900	75'	61'	30'	7'	35'	DL/WO	943.25	
29	6TH AVE SW	\$62,900	71'	57'	30'	7'	35'	STD	943.25	
30	6TH AVE SW	\$59,900	72'	58'	30'	7'	35'	STD	943.25	
31	6TH AVE SW	\$59,900	72'	58'	30'	7'	35'	STD	943.25	
32	6TH AVE SW	\$59,900	72'	58'	30'	7'	35'	STD	945.00	
33	6TH AVE SW	\$59,900	72'	58'	30'	7'	35'	STD	945.00	
34	6TH AVE SW	\$59,900	72'	58'	30'	7'	35'	STD	945.00	
35	6TH AVE SW	\$62,900	77'	63'	30'	7'	35'	STD	945.25	
36	6TH AVE SW	\$62,900	77'	63'	30'	7'	35'	STD	945.25	
37	6TH AVE SW	\$62,900	77'	63'	30'	7'	35'	STD	945.25	
38	6TH AVE SW	\$62,900	77'	63'	30'	7'	35'	STD	945.25	
39	6TH AVE SW	\$66,900	77'	63'	30'	7'	35'	STD	945.25	
40	6TH AVE SW	\$68,900	77'	63'*	30'	7'	35'	STD	945.25	

NOTES: Ⓛ FRONT YARD SETBACK APPLIES TO EACH STREET SIDE OF CORNER LOTS.

* BUILDABLE WIDTH IS MEASURED FROM THE FRONT YARD SETBACK. WIDTHS VARY ON SOME LOTS AND MAY BE SMALLER AS YOU PROGRESS INTO THE LOT.

** REAR YARD SETBACK VARIES DUE TO EASEMENTS

LOTS HAVE A TOTAL SIDE YARD SETBACK OF 14'

STD
WO
DL
MPE

STANDARD LOT
WALKOUT LOT
DAYLIGHT LOT
MINIMUM PROTECTION ELEVATION

Updated 5/14/2018



