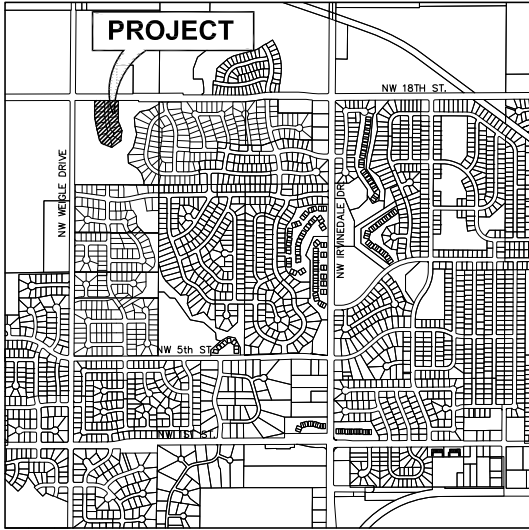
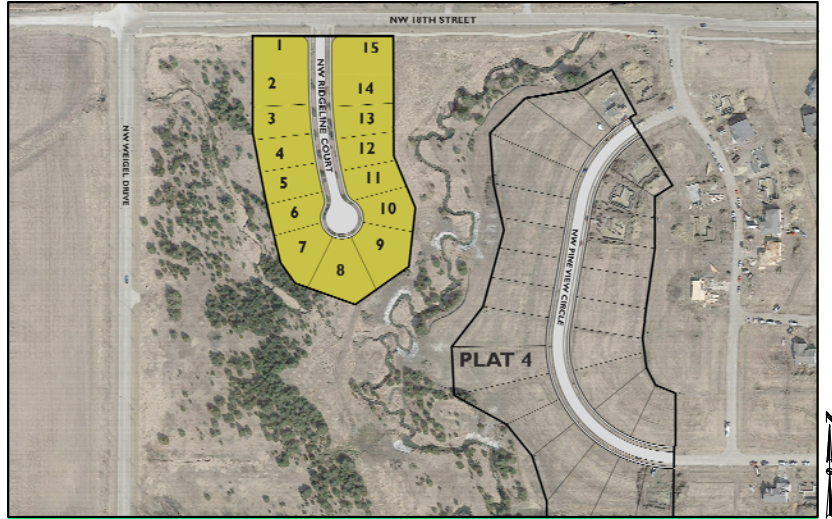


SALES PLAT FOR: PINE VIEW ESTATES PLAT 6

ANKENY, IOWA



ANKENY, IOWA



PLAT INFORMATION

LOT NO.	ADDRESS	LOT PRICE	LOT WIDTH	BUILDABLE WIDTH*		FRONT SETBACK	SIDE SETBACK		REAR SETBACK	BASEMENT	M.P.E.
				RANCH	2 STORY		RANCH	2 STORY			
1	1712 NW RIDGELINE COURT	SOLD	102'	65'	64' ①	30'	7'/8'	8'/9'	35'	STD	--
2	1708 NW RIDGELINE COURT	SOLD	80'	65'	63'	30'	7'/8'	8'/9'	35'	STD	--
3	1704 NW RIDGELINE COURT	SOLD	80'	65'	63'	30'	7'/8'	8'/9'	35'	STD	--
4	1618 NW RIDGELINE COURT	SOLD	80'	65'	63'	30'	7'/8'	8'/9'	35'	STD	--
5	1614 NW RIDGELINE COURT	SOLD	80'	65'	63'	30'	7'/8'	8'/9'	35'	STD	--
6	1610 NW RIDGELINE COURT	SOLD	80'	65'	63'	30'	7'/8'	8'/9'	35'	DL	--
7	1606 NW RIDGELINE COURT	SOLD	80'	65'	63'	30'	7'/8'	8'/9'	35'	DL	943.00
8	1602 NW RIDGELINE COURT	SOLD	80'	64'	63'	30'	7'/8'	8'/9'	35'	DL	943.00
9	1603 NW RIDGELINE COURT	SOLD	86'**	61'	61'	30'	7'/8'	8'/9'	35'	WO	943.00
10	1607 NW RIDGELINE COURT	SOLD	80'	56'	55'	30'	7'/8'	8'/9'	35'	WO	943.00
11	1611 NW RIDGELINE COURT	SOLD	80'	65'*	63'	30'	7'/8'	8'/9'	35'	DL	943.00
12	1615 NW RIDGELINE COURT	SOLD	83'	68'*	66'	30'	7'/8'	8'/9'	35'	DL	943.00
13	1701 NW RIDGELINE COURT	SOLD	83'	68'*	66'	30'	7'/8'	8'/9'	35'	DL	943.00
14	1705 NW RIDGELINE COURT	SOLD	83'	68'	66'	30'	7'/8'	8'/9'	35'	DL	943.00
15	1709 NW RIDGELINE COURT	SOLD	102'	65'	64' ①	30'	7'/8'	8'/9'	35'	STD	--

NOTES: ① FRONT YARD SETBACK APPLIES TO EACH STREET SIDE OF CORNER LOTS.

* BUILDABLE WIDTH IS MEASURED FROM THE FRONT YARD SETBACK. WIDTHS VARY ON SOME LOTS AND MAY BE SMALLER AS YOU PROGRESS INTO THE LOT.

** REAR YARD SETBACK VARIES DUE TO EASEMENTS

1-STORY HOMES HAVE A TOTAL SIDE YARD SETBACK OF 15'
>1-STORY HOMES HAVE A TOTAL SIDE YARD SETBACK OF 17'

STD STANDARD LOT
WO WALKOUT LOT
DL DAYLIGHT LOT
MPE MINIMUM PROTECTION ELEVATION



SALES PLAT FOR: PINE VIEW ESTATES PLAT 6

ANKENY, IOWA

NW 18TH STREET

