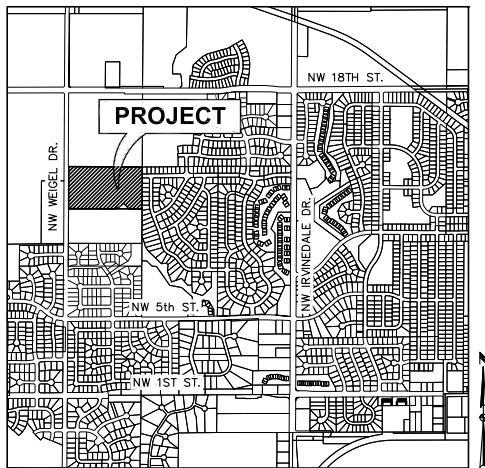
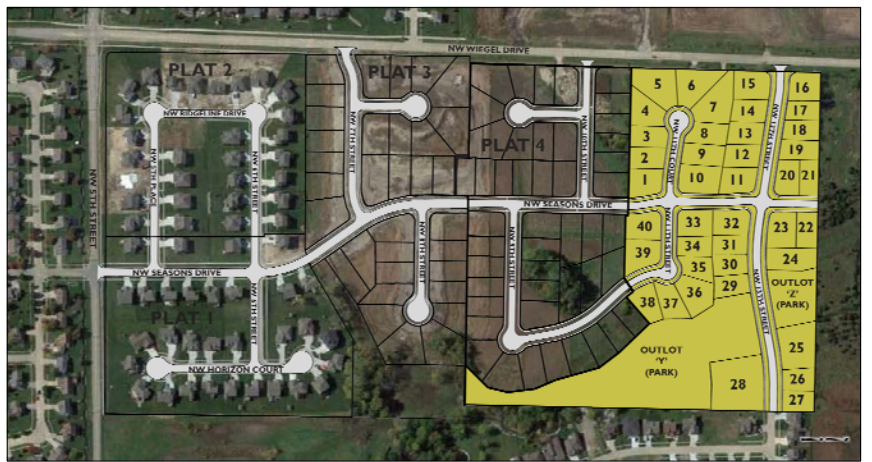


SALES PLAT FOR: ROCK CREEK CROSSING PLAT 5

ANKENY, IOWA



ANKENY, IOWA



ANKENY, IOWA

PLAT INFORMATION

LOT NO.	ADDRESS	LOT PRICE	LOT WIDTH	BUILDABLE WIDTH*		FRONT SETBACK	SIDE SETBACK		REAR SETBACK	BASEMENT	M.P.E.
				RANCH	2 STORY		RANCH	2 STORY			
1	3903 NW 11TH COURT 1010 NW SEASONS DRIVE	SOLD	96'	59'	58' ①	30'	7' 8'	8' 9'	35'	STD	960.50
2	3907 NW 11TH COURT	SOLD	80'	65'	63'	30'	7' 8'	8' 9'	35'	STD	960.50
3	3911 NW 11TH COURT	SOLD	80'	65'	63'	30'	7' 8'	8' 9'	35'	STD	---
4	3915 NW 11TH COURT	SOLD	80'	65'	63'	30'	7' 8'	8' 9'	35'	STD	---
5	3919 NW 11TH COURT	SOLD	80'	65'	63'	30'	7' 8'	8' 9'	35'	STD	---
6	3920 NW 11TH COURT	SOLD	80'	65'	63'	30'	7' 8'	8' 9'	35'	STD	---
7	3916 NW 11TH COURT	SOLD	80'	65'	63'	30'	7' 8'	8' 9'	35'	WO	---
8	3912 NW 11TH COURT	SOLD	80'	65'	63'	30'	7' 8'	8' 9'	35'	WO	---
9	3908 NW 11TH COURT	SOLD	80'	65'	63'	30'	7' 8'	8' 9'	35'	WO	953.50
10	3904 NW 11TH COURT 1104 NW SEASONS DRIVE	SOLD	109'*	72'	71' ①	30'	7' 8'	8' 9'	35'	DL/WO	953.50
11	3905 NW 13TH STREET 1112 NW SEASONS DRIVE	SOLD	102'	65'	64' ①	30'	7' 8'	8' 9'	35'	DL	953.50
12	3909 NW 13TH STREET	SOLD	85'	70'	68'	30'	7' 8'	8' 9'	35'	WO	953.50
13	3913 NW 13TH STREET	SOLD	85'	70'	68'	30'	7' 8'	8' 9'	35'	WO	---
14	3917 NW 13TH STREET	SOLD	85'	70'	68'	30'	7' 8'	8' 9'	35'	WO	---
15	3921 NW 13TH STREET	SOLD	106'	69'	68'	30'	7' 8'	8' 9'	35'	WO	---
16	3918 NW 13TH STREET	SOLD	106'	69'	68'	30'	7' 8'	8' 9'	35'	WO	---
17	3914 NW 13TH STREET	SOLD	74'	59'	57'	30'	7' 8'	8' 9'	35'	WO	---
18	3910 NW 13TH STREET	SOLD	74'	59'	57'	30'	7' 8'	8' 9'	35'	WO	---
19	3906 NW 13TH STREET	SOLD	74'	57'	56'	30'	7' 8'	8' 9'	35'	WO	955.50
20	3902 NW 13TH STREET 1302 NW SEASONS DRIVE	SOLD	96'*	59'	58' ①	30'	7' 8'	8' 9'	35'	STD	---
21	1316 NW SEASONS DRIVE	SOLD	74'	57'	56'	30'	7' 8'	8' 9'	35'	STD	---
22	1307 NW SEASONS DRIVE	SOLD	82'	67'	65'	30'	7' 8'	8' 9'	35'	WO	---
23	3816 NW 13TH STREET 1302 NW SEASONS DRIVE	SOLD	105'	68'	67' ①	30'	7' 8'	8' 9'	35'	WO	---
24	3808 NW 13TH STREET	SOLD	85'*	70'	68'	30'	7' 8'	8' 9'	35'	STD	943.00
25	3710 NW 13TH STREET	SOLD	160'	145'	143'	30'	7' 8'	8' 9'	35'	STD	943.00
26	3706 NW 13TH STREET	SOLD	80'	65'	63'	30'	7' 8'	8' 9'	35'	STD	---
27	3702 NW 13TH STREET	SOLD	80'	65'	63'	30'	7' 8'	8' 9'	35'	STD	---
28	3707 NW 13TH STREET	SOLD	208'*	193'	191'	30'	7' 8'	8' 9'	35'	WO	---
29	3803 NW 13TH STREET	SOLD	74'	53'	52'	30'	7' 8'	8' 9'	35'	STD	---
30	3807 NW 13TH STREET	SOLD	72'	57'	55'	30'	7' 8'	8' 9'	35'	STD	---
31	3811 NW 13TH STREET	SOLD	72'	57'	55'	30'	7' 8'	8' 9'	35'	DL	---
32	3817 NW 13TH STREET 1113 NW SEASONS DRIVE	SOLD	94'	57'	56' ①	30'	7' 8'	8' 9'	35'	DL/WO	---
33	3814 NW 11TH STREET 1105 NW SEASONS DRIVE	SOLD	101'	64'	63' ①	30'	7' 8'	8' 9'	35'	WO	---
34	3810 NW 11TH STREET	SOLD	74'	59'	57'	30'	7' 8'	8' 9'	35'	WO	---
35	3806 NW 11TH STREET	SOLD	74'	59'	57'	30'	7' 8'	8' 9'	35'	WO	---
36	3802 NW HORIZON DRIVE	SOLD	80'	65'	63'	30'	7' 8'	8' 9'	35'	WO	---
37	1021 NW HORIZON DRIVE	SOLD	83'	68'	66'	30'	7' 8'	8' 9'	35'	WO	---
38	1017 NW HORIZON DRIVE	SOLD	99'*	83'	81'	30'	7' 8'	8' 9'	35'	WO	---
39	3805 NW 11TH STREET	SOLD	95'	58'	57'	30'	7' 8'	8' 9'	35'	STD	---
40	3813 NW 11TH STREET 1015 NW SEASONS DRIVE	SOLD	109'*	72'	71' ①	30'	7' 8'	8' 9'	35'	STD	---

NOTES: ① FRONT YARD SETBACK APPLIES TO EACH STREET SIDE OF CORNER LOTS.

* BUILDABLE WIDTH IS MEASURED FROM THE FRONT YARD SETBACK. WIDTHS VARY ON SOME LOTS AND MAY BE SMALLER AS YOU PROGRESS INTO THE LOT.

** REAR YARD SETBACK VARIES DUE TO EASEMENTS

1-STORY HOMES HAVE A TOTAL SIDE YARD SETBACK OF 15'
>1-STORY HOMES HAVE A TOTAL SIDE YARD SETBACK OF 17'

STD STANDARD LOT
WO WALKOUT LOT
DL DAYLIGHT LOT
MPE MINIMUM PROTECTION ELEVATION



DIAMOND DEVELOPMENT LLC
Ankeny, Iowa

Updated 6/15/2016

ROCK CREEK CROSSING PLAT 5

ANKENY, IOWA

