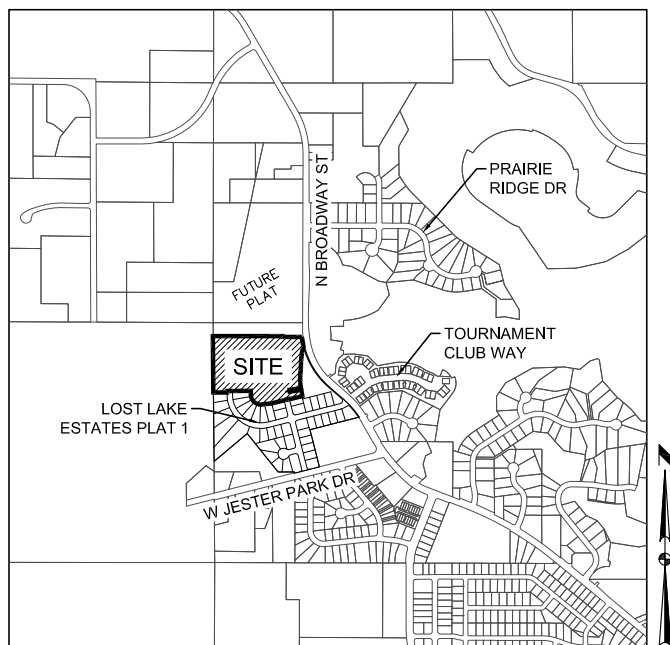


# SALES PLAT FOR: LOST LAKE ESTATES PLAT 2

POLK CITY, IOWA



POLK CITY, IOWA



## PLAT INFORMATION

LOT NO.	ADDRESS	LOT PRICE	LOT WIDTH	BUILDABLE WIDTH*	FRONT SETBACK	SIDE SETBACK**	REAR SETBACK	BASEMENT	M.O.E.
1	705 LOST LAKE DRIVE	<b>SOLD</b>	80'	64'	30'	8'	35'	STD	--
2	701 LOST LAKE DRIVE	<b>SOLD</b>	80'	64'	30'	8'	35'	DL	--
3	617 LOST LAKE DRIVE	<b>SOLD</b>	77'	64'	30'	8'	35'	DL	--
4	613 LOST LAKE DRIVE	<b>SOLD</b>	80'	64'	30'	8'	35'	DL/WO	--
5	609 LOST LAKE DRIVE	<b>SOLD</b>	82'	64'	30'	8'	35'	WO	--
6	605 LOST LAKE DRIVE	<b>SOLD</b>	83'	64'	30'	8'	35'	WO	--
7	601 LOST LAKE DRIVE	<b>SOLD</b>	83'	64'	30'	8'	35'	WO	--
8	509 LOST LAKE DRIVE	<b>SOLD</b>	81'	64'	30'	8'	35'	WO	--
9	508 LOST LAKE DRIVE	<b>SOLD</b>	90'	69'	30'	8'	VARIES <sup>②</sup>	WO	969.00'
10	600 LOST LAKE DRIVE	<b>SOLD</b>	89'	69'	30'	8'	VARIES <sup>②</sup>	WO	969.00'
11	604 LOST LAKE DRIVE	<b>SOLD</b>	90'	77'	30'	8'	VARIES <sup>②</sup>	WO	969.00'
12	608 LOST LAKE DRIVE	<b>SOLD</b>	88'	74'	30'	8'	35'	WO	969.00'
13	612 LOST LAKE DRIVE/1800 MEADOW LARK DRIVE	<b>SOLD</b>	115'	74'	30' <sup>①</sup>	8'	35'	WO	969.00'
14	1804 MEADOW LARK DRIVE	<b>SOLD</b>	108'	81'	30'	8'	35'	DL/WO	969.00'
15	1808 MEADOW LARK DRIVE	<b>SOLD</b>	80'	64'	30'	8'	35'	DL/WO	969.00'
16	1900 MEADOW LARK DRIVE	<b>SOLD</b>	102'	77'	30'	8'	35'	DL	969.00'
17	1908 MEADOW LARK DRIVE	<b>SOLD</b>	106'	79'	30'	8'	35'	STD	969.00'
18	1912 MEADOW LARK DRIVE	<b>SOLD</b>	105'	78'	30'	8'	35'	STD	969.00'
19	1920 MEADOW LARK DRIVE	<b>SOLD</b>	102'	70'	30'	8'	35'	STD	969.00'
20	1921 MEADOW LARK DRIVE	<b>SOLD</b>	86'	74'	30'	8'	35'	WO	--
21	1917 MEADOW LARK DRIVE	<b>SOLD</b>	83'	74'	30'	8'	60'	WO	--
22	1913 MEADOW LARK DRIVE	<b>SOLD</b>	83'	74'	30'	8'	35'	WO	--
23	1909 MEADOW LARK DRIVE	<b>SOLD</b>	83'	74'	30'	8'	VARIES <sup>②</sup>	WO	--
24	1905 MEADOW LARK DRIVE	<b>SOLD</b>	83'	74'	30'	8'	VARIES <sup>②</sup>	STD/DL	--
25	1901 MEADOW LARK DRIVE	<b>SOLD</b>	83'	74'	30'	8'	VARIES <sup>②</sup>	DL	--
26	1813 MEADOW LARK DRIVE	<b>SOLD</b>	90'	74'	30'	8'	VARIES <sup>②</sup>	DL	--
27	1809 MEADOW LARK DRIVE	<b>SOLD</b>	81'	69'	30'	8'	VARIES <sup>②</sup>	DL	--
28	1805 MEADOW LARK DRIVE	<b>SOLD</b>	81'	69'	30'	8'	35'	STD/DL	--
29	700 LOST LAKE DRIVE/1801 MEADOW LARK DRIVE	<b>SOLD</b>	107'	69'	30' <sup>①</sup>	8'	35'	STD	--

NOTES: <sup>①</sup> FRONT YARD SETBACK APPLIES TO EACH STREET SIDE OF CORNER LOTS.

<sup>②</sup> REAR YARD SETBACKS VARY DUE TO DETENTION AND STORM EASEMENTS THAT RUN THROUGH THE BACK YARD.

\* BUILDABLE WIDTH IS MEASURED FROM THE FRONT YARD SETBACK. WIDTHS VARY ON SOME LOTS AND MAY BE SMALLER AS YOU PROGRESS INTO THE LOT.

\*\* TOTAL SIDE YARD SETBACK = 16'

STD STANDARD LOT  
WO WALKOUT LOT  
DL DAYLIGHT LOT  
MOE MINIMUM OPENING ELEVATION



**DIAMOND DEVELOPMENT LLC**  
Ankeny, Iowa

# LOST LAKE ESTATES PLAT 2

POLK CITY, IOWA

