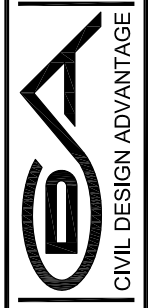


**NOTE**  
 REFER TO SEPARATE STORM  
 WATER POLLUTION PREVENTION  
 PLAN FOR DETAILS ON EROSION  
 AND SEDIMENT CONTROLS.

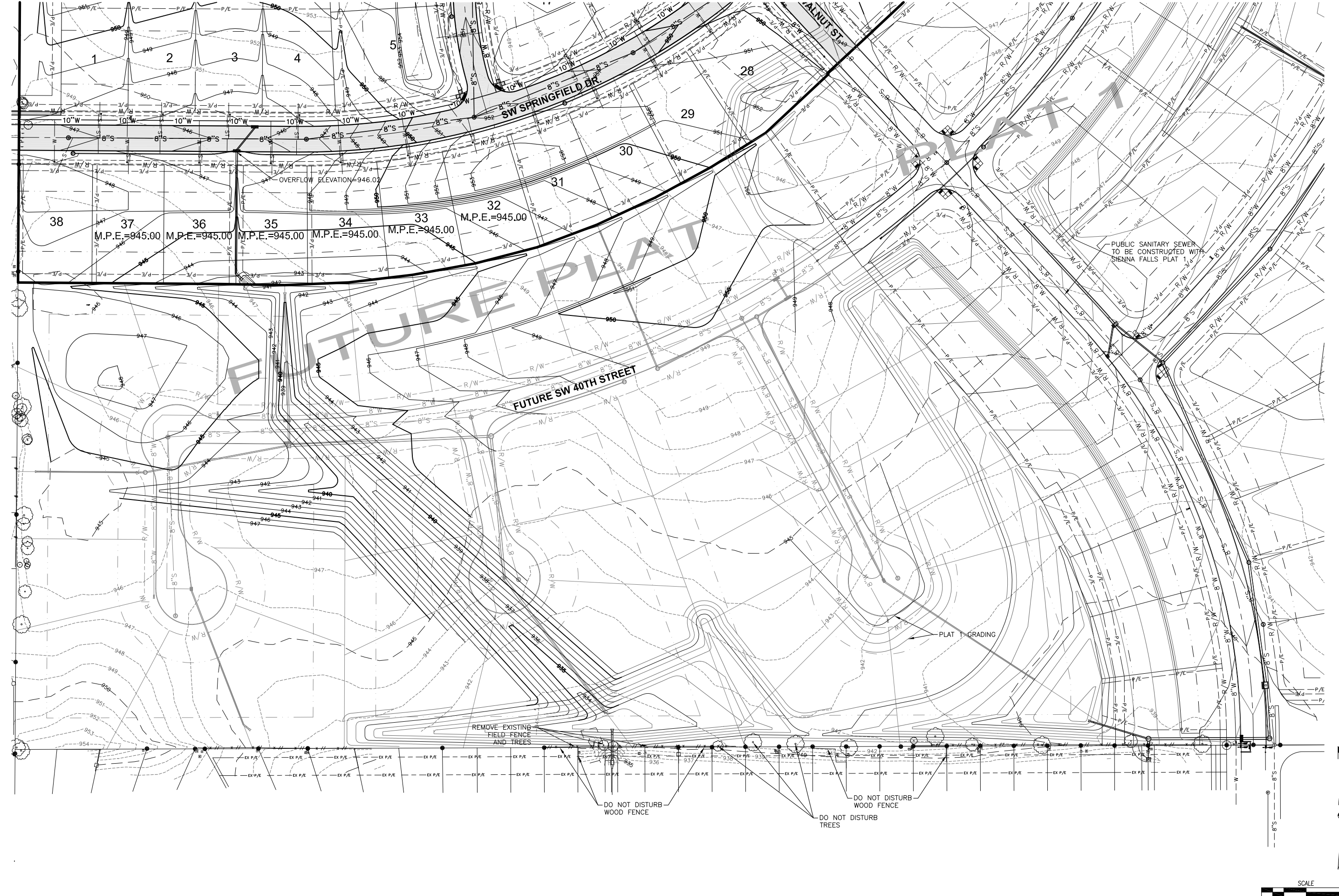
REVISIONS	DATE
AS-BUILT SUBMITTAL	8/28/13
FINAL SUBMITTAL	4/25/12
THIRD SUBMITTAL	4/18/12
SECOND SUBMITTAL	3/26/12
FIRST SUBMITTAL	2/03/12

3405 S.E. CROSSROADS DRIVE, SUITE G  
 GRIMES, IOWA 50111  
 PHONE: (515) 369-4400 FAX: (515) 369-4410  
 ENGINEER: EKO  
 TECH:



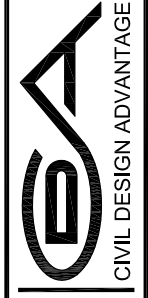
ANKENY, IOWA

**SIENNA FALLS PLAT 3**  
**GRADING PLAN**



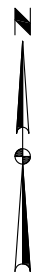
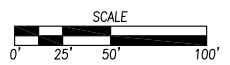
REVISIONS	DATE
AS-BUILT SUBMITTAL	8/28/13
FINAL SUBMITTAL	4/25/12
THIRD SUBMITTAL	4/18/12
SECOND SUBMITTAL	3/26/12
FIRST SUBMITTAL	2/23/12

3405 S.E. CROSSROADS DRIVE, SUITE G  
 GRIMES, IOWA 50111  
 PHONE: (515) 369-4400 FAX: (515) 369-4410  
 ENGINEER: EKO



ANKENY, IOWA

# SIENNA FALLS PLAT 3 GRADING PLAN



PUBLIC SANITARY SEWER  
 TO BE CONSTRUCTED WITH  
 SIENNA FALLS PLAT 1

PLAT 1 GRADING

REMOVE EXISTING  
 FIELD FENCE  
 AND TREES

DO NOT DISTURB  
 WOOD FENCE

DO NOT DISTURB  
 WOOD FENCE

DO NOT DISTURB  
 TREES

M.P.E.=945.00 M.P.E.=945.00 M.P.E.=945.00 M.P.E.=945.00 M.P.E.=945.00 M.P.E.=945.00

OVERFLOW ELEVATION=946.02