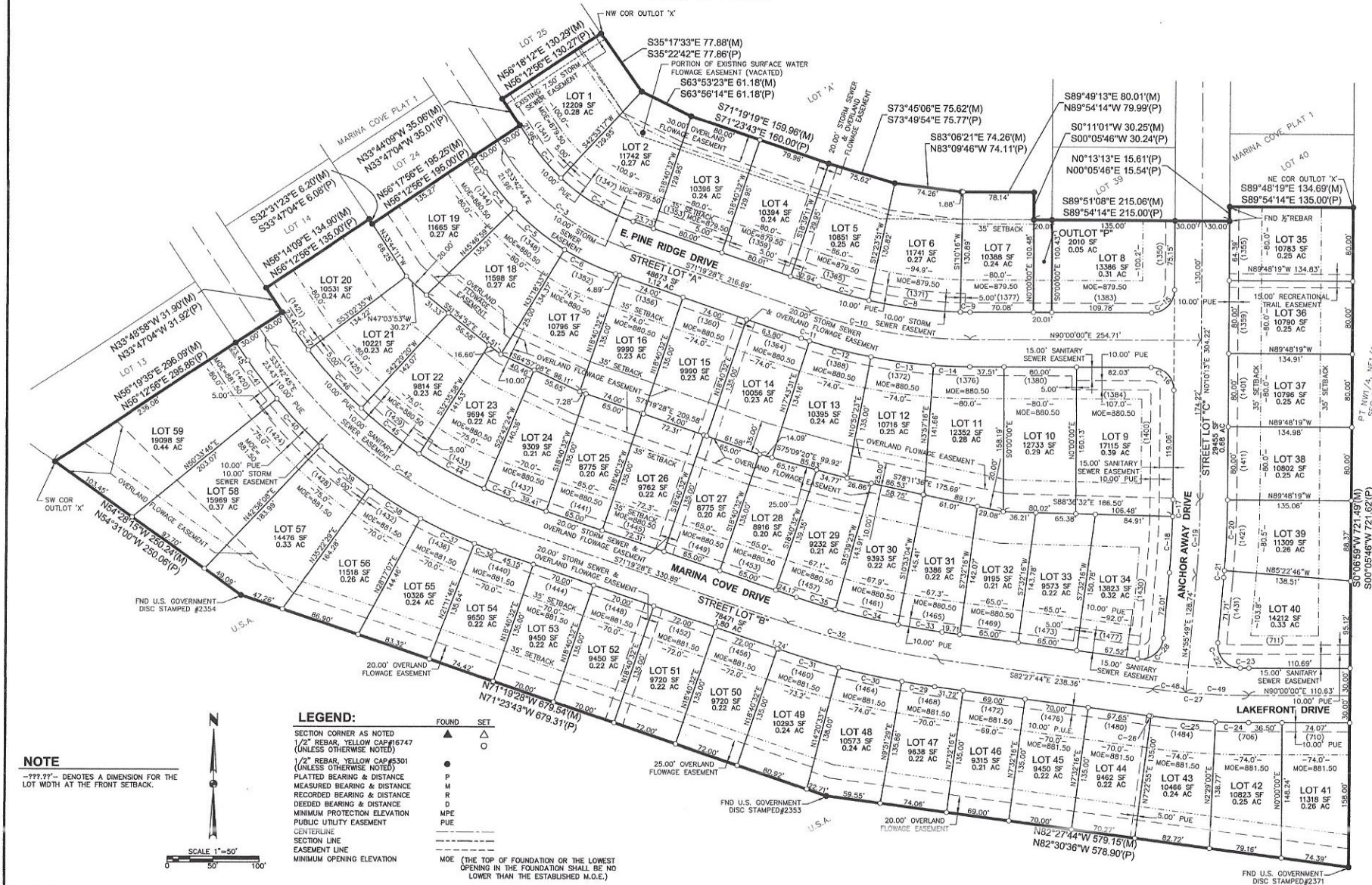


# MARINA COVE PLAT 2 FINAL PLAT



DATE	REVISIONS
06-21-11 <td>FINAL SUBMITTAL</td>	FINAL SUBMITTAL
06-26-11 <td>THIRD SUBMITTAL</td>	THIRD SUBMITTAL
11-03-10 <td>SECOND SUBMITTAL</td>	SECOND SUBMITTAL
10-03-10 <td>OFFER SUBMITTAL</td>	OFFER SUBMITTAL

3405 SE CROSSROADS DRIVE, SUITE G  
GRIMES, IOWA 50111  
PH: (515) 369-4410  
Fax: (515) 369-4400

TECH: MDL  
ENGINEER: EKO



**MARINA COVE PLAT 2  
FINAL PLAT**

POLK CITY, IOWA