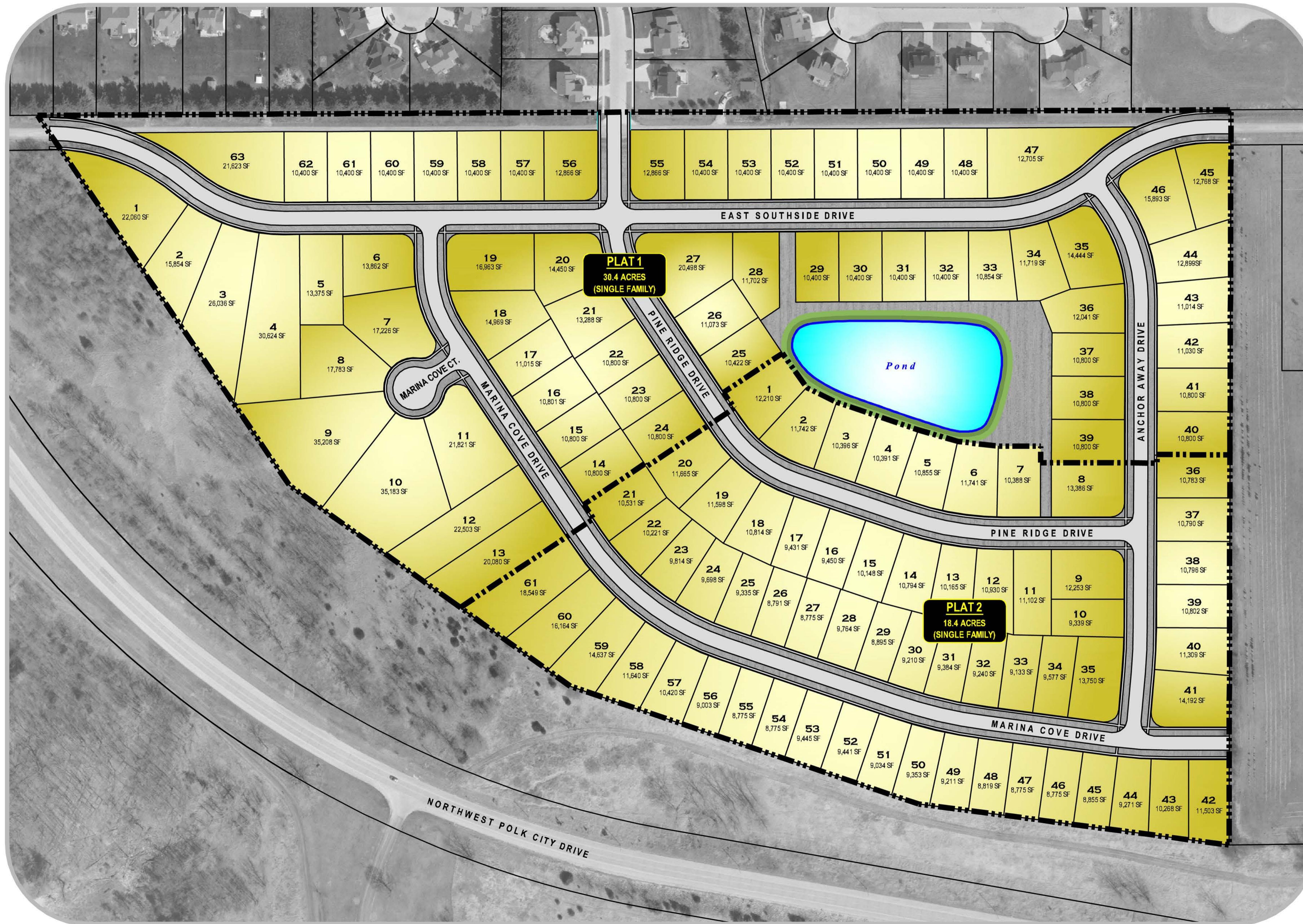
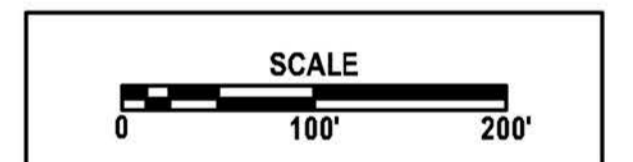
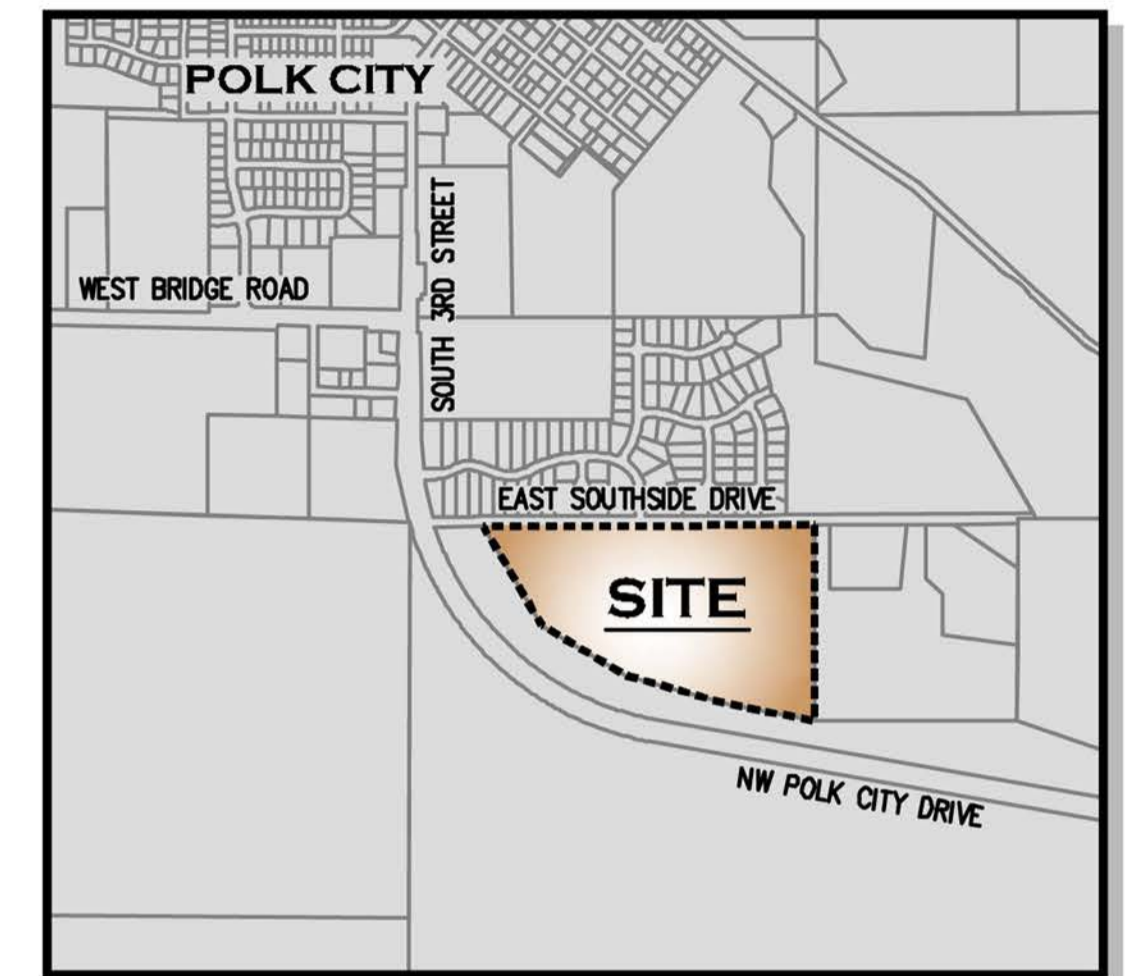


# Marina Cove Plat 1 & 2

POLK CITY, IOWA



VICINITY MAP (not to scale)



NOTE:  
ARTISTIC RENDITION,  
FINAL PLANS SUBJECT  
TO CHANGE.

www.stanbrough.com  
**STANBROUGH**  
DEVELOPMENT, INC.  
515-331-2200  
*"The Sign of Integrity"*  
Dan Stanbrough, Developer

**GA**  
CIVIL DESIGN ADVANTAGE